

7-082 Quarter-Turn Pr20.1 L30-60

Tool or hand operable, IP65, Stainless Steel, Optional pre-assembly

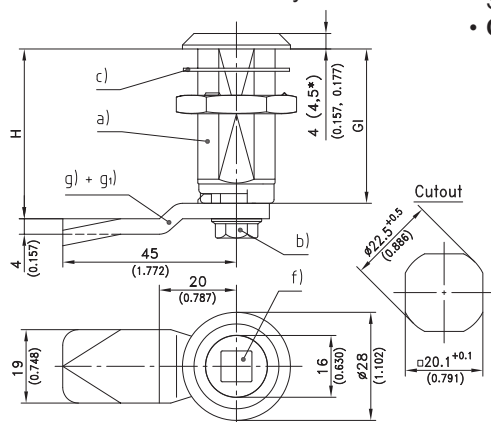


Product Notes:

- RH and LH application
- Quarter-Turn consists of three components which are combined to fit application
- Components can be pre-assembled by DIRAK upon request
- **The adapter system is modular and can consist of one or more separate extensions
- Extended housing
- Zinc die - see Product System 1-110

Material:

- **Housing:** Stainless Steel AISI 304
- **Flat external seal:** Perbunan 65° Shore A, Black
- **Insert:** Stainless Steel AISI 316L and PA
- **O-Ring:** NBR
- **Grounding nut:** Stainless Steel AISI 316L
- **Adapter:** Stainless Steel AISI 316
- **Hexagon screw and wave washer:** Stainless Steel
- **Cam:** Stainless Steel AISI 304



Housing Length (GI)	a) Housing with Grounding Nut	b) Adapter set** with Screw / Toothed Lock Washer
GI = 30mm/1.181 (housing head height=4mm)	200-9072	100-9019
GI = 36mm/1.417 (housing head height=4.5mm)	100-9024	100-9020
GI = 40mm/1.575 (housing head height=4.5mm)	200-9073	100-9021
GI = 50mm/1.969 (housing head height=4mm)	200-9074	100-9022
GI = 60mm/2.362 (housing head height=4mm)	200-9075	100-9023
c) Flat external seal	200-0901	
d) O-ring 9x3.5mm	839-3771.00-00935	
e) Assembling adapter with O-ring	200-0004	

f) Insert with screw, wave washer and O-ring	See Page
Square 6mm	200-9146
Square 7mm	200-9119
Square 8mm	200-9120
Triangular 7mm	200-9121
Triangular 8mm	200-9122
Double bit 3mm	200-9123
Double bit 5mm	200-9124
Slotted 2x4mm deep	200-9151
Star knob with Stainless Steel core/insert with PA knob	200-9125
Wing knob with Stainless Steel core/insert with PA knob	200-9179
7/16" hex.	200-9192
Socket hex. 8 mm (5/16")	200-9195
Socket hex. 8 mm (5/16"), with pin	100-9118

g) Cams L45mm H at housing length (GI):						
GI 30	GI 36	GI 40	GI 50	GI 60		
18	24	28	38	48	200-0506	
20	26	30	40	50	200-0508	
22	28	32	42	52	200-0510	
26	32	36	46	56	200-0514	
28	34	38	48	58	200-0516	
30	36	40	50	60	200-0518	
32	38	42	52	62	200-0520	
34	40	44	54	64	200-0522	
36	42	46	56	66	200-0524	
38	44	48	58	68	200-0526	
40	46	50	60	70	200-0528	
44	50	54	64	74	200-0532	
62	68	72	82	92	200-0550	

g1) Cams L35mm H at housing length (GI):						
GI 30	GI 36	GI 40	GI 50	GI 60		
32	38	42	52	62	200-4535.00-00020	
34	40	44	54	64	200-4535.00-00022	

i1) Key for insert	10.18
i2) Dust cap and finger pull	01.106

h) Assembling of cam, with O-ring	200-0002
-----------------------------------	----------